



Study hard, play hard

専門 日本建築藝術大學校
学校

Japan Architecture Art Academy



Studying architecture that utilizes wood.

We would like to convey the warmth and comfort of wood.

In this era where we can construct skyscrapers with woods, we would like to emphasize the significance of wood.

Building with woods is at the forefront of innovation.

At the foot of Mount Fuji,

a world-renowned resort destination and a spiritual site, you will study advanced traditional wooden architecture and modern architecture.

Exploration, experimentation, and activities in the lab.

Custom-made classes tailored to each individual's roadmap.

A talented faculty and 30 successful guest lecturers will help your talent bloom.

You can become the person you want to be!

Upon graduation, you will obtain the qualification to take the class1 architect examination.

Even after you graduate, we will continue to guide you until you receive your certification.

Those who want to go on to graduate school for architecture can also continue their studies and research after graduation.

There is no job as creative as architecture.

Every one of you is an artist.

It's a wonderful job that protects people's lives and property!

It will never disappear, even in an AI society.

Learning together is rewarding and pleasurable.

Architect + Structural design

Succeed globally

Shrine carpenter + Master carpenter

Preserve Japanese tradition

Construction management engineer

Become a site supervisor

CAD

Bringing designs to life

What will you challenge?



Study hard, play hard

日本建築藝術大學校
Japan Architecture Art Academy



Studying Architecture That Utilizes Wood through a Unique System

For 36 years, our school has been renowned for its excellence in traditional and wooden architecture. Many of our graduates have found employment as advanced architecture professionals or have started their own architectural offices, construction management offices, construction companies, and housing companies. In our boarding school system, you will spend four years studying at a resort destination and a spiritual site at the foot of Mount Fuji, where you will also make lifelong friends.

Architect + Structure design Succeed globally Shrine carpenter Preserve Japanese tradition

Construction management engineer Become a site supervisor CAD Bringing designs to life

Not just learned in classrooms Architects familiar with construction sites

Create a roadmap for life Architectural business management Successful business model

Design skills to win competitions Establishing an in-school company with classmates

Branding Granting of the advanced specialist title 100% employment rate

First Step to Your Dream

01

What Do You Want to Be?

Create your own roadmap to your dreams and future, and make your dreams a reality through practical learning. Go beyond just "learning" in "practical training" by thinking for yourself, trying, making mistakes, getting help from professors and classmates, and challenging yourself again. At our school, we call this concept "experimental" classes rather than "practical training." Rather than mere observation and imitation, you learn by thinking for yourself and acquiring skills firsthand. This approach immerses you not only in traditional and wooden architecture but also in knowledge and techniques such as CAD, structural engineering, surveying, cultural history, and more.



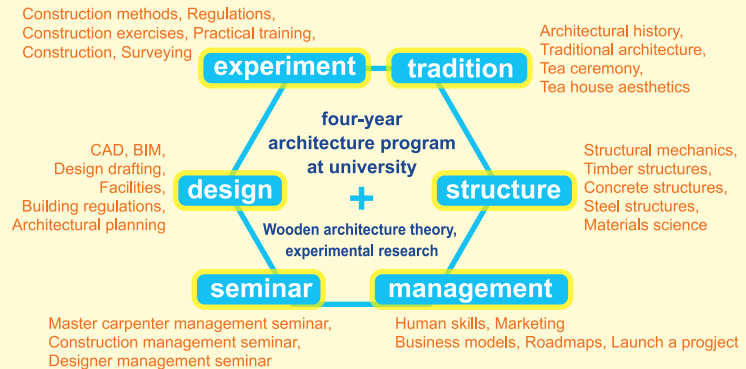
Keep on Learning

02

Fundamentals • Experiments • Research

Fundamental learning and research toward achieving dreams

In the first and second years, you undergo foundational learning and practical experiments in subjects such as building regulations, structural mechanics, materials science, and design. In the third and fourth years, you join a research lab to conduct studies based on your individual roadmap.



Your Dream Is Getting Closer

03

Obtain a Qualification While Enrolled

We will support you in obtaining your certification, even after graduation.

Qualifications for architects and construction management engineers are necessary to work in these fields. At our school, in addition to the national qualification for architectural carpenters, you can take exams for construction management engineer and architect while still enrolled. Besides national certifications, you can pursue many other qualifications.

First-class
Architect

In application

Second-class
Architect

Passing the preliminary exam only

First-class
Construction
Management
Engineer

Second-class
Architectural
Carpenter

Expand your
dreams!

You can obtain a driver's license while enrolled
Additional fees apply



Empower Your Future!

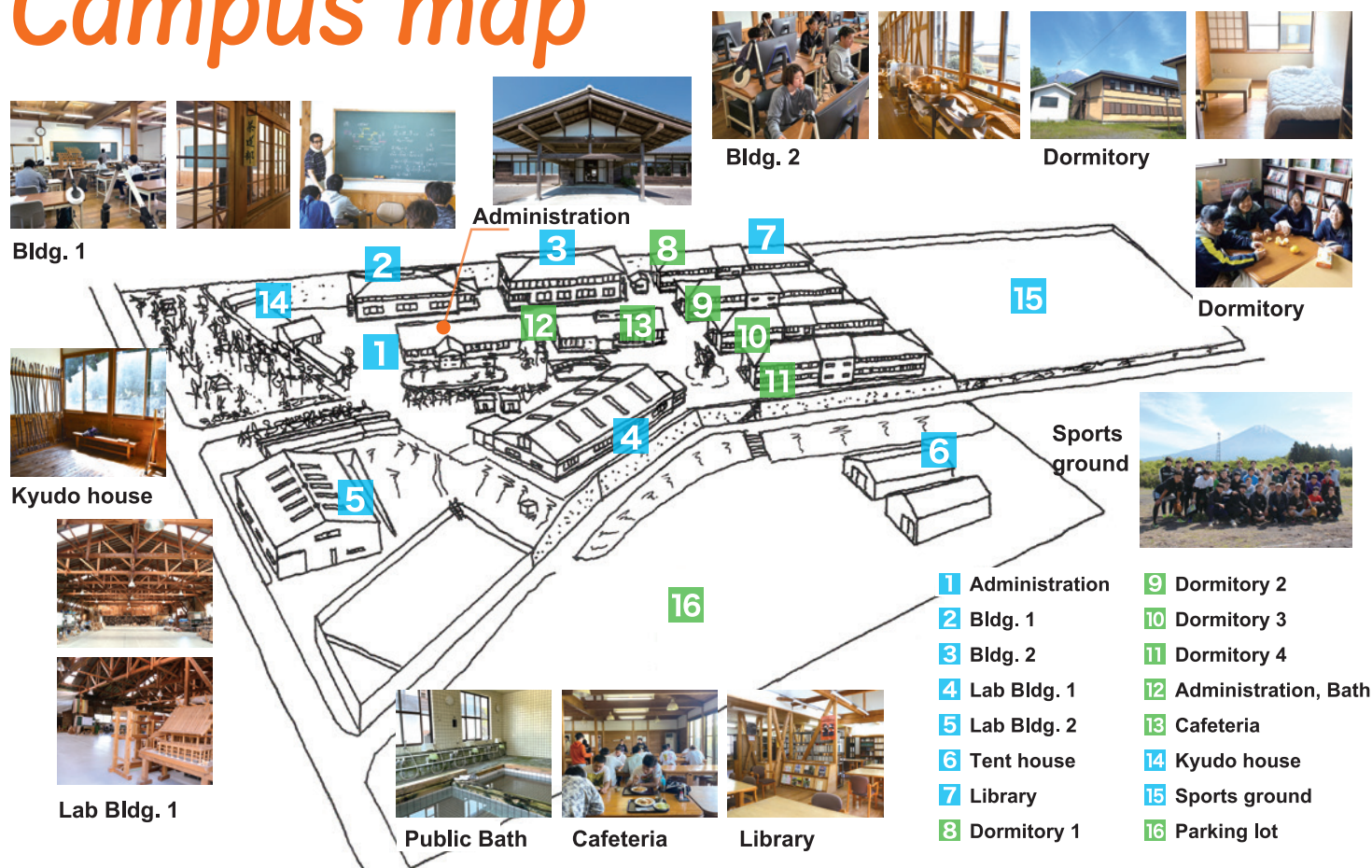
04

Now, Make Your Dreams Come True!

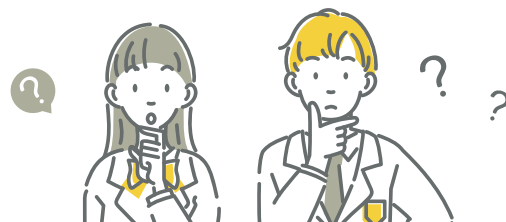
Our school has a 100% employment rate. We provide tailored support such as resume writing and interview practice to help students achieve their career goals. In the future, many of our graduates will be successful in various fields, such as setting up their own offices, becoming entrepreneurs, or working as independent professionals. We also offer post-employment support at the Shibuya Incubation Center.



Campus map



Q&A If you have any questions, please feel free to contact us.



How does this school differ from a university's architecture department?

While universities mainly focus on classroom learning, our school emphasizes practical experiments and training. Additionally, our four-year program includes numerous lectures necessary for obtaining qualifications.

What else can I learn besides wooden architecture?

At our school, you can study business administration, including success and failure case studies, marketing, business models, independence, and dealing with banks and clients.

What is the atmosphere like at the school?

The atmosphere among students is highly motivated and focused on architecture, creating a supportive environment. Living in the dormitories helps everyone form lifelong friendships.

Is it possible to work part-time?

Yes, you can. With a driver's license, you can work part-time anywhere you like, including high-paying opportunities introduced by our school.

I didn't attend a technical high school.

Will I be able to keep up in class?

Initially, there might be some differences in knowledge, but these will lessen as the course progresses. Students from regular high schools have no issues.

How many experiments is there in the curriculum?

At our school, freshmen have practical training in the afternoons, while from the second year onward, it's elective. For CAD practical's, you use the latest software on large screens.

Can anyone participate in the campus tour?

Yes, anyone is welcome to participate. This includes not only high school students but also working adults. A free shuttle service is available from the nearest train station.

What's it like living in the dormitory?

The dorms have private rooms and provide three meals daily, including weekends. There's a large communal bath for male students, and live-in staff ensure safety, even at night.

A free shuttle service is available! Check out Campus tour information here.

Campus tour is a great opportunity to get a feel for the school atmosphere and hear from current students. You can attend alone, with friends, or with your parents. Please feel free to join us!



Tuition Fees

	Admission fee	Tuition fee (annual)	Practical fee	facility fee	Association admission fee	Association fee	Total fee
1st stage	¥280,000	¥1,110,000	¥132,000	¥100,000	¥20,000	¥12,000	¥1,654,000
2nd - 4th stage	-	¥1,110,000	¥132,000	¥100,000	-	¥12,000	¥1,354,000

Textbooks, reference books, and practical tools must be purchased separately (¥280,000~).

Total Dormitory Fees approximately ¥36,000 / Monthly + Meal costs

Details Dormitory fees : ¥30,000 per month Electricity bills: approximately ¥6,000 per month Meal costs: ¥1,485 per day

- 1.The dormitory fees and meal costs are inclusive of tax.
- 2.Meals are provided three times a day, including weekends, except during long holidays.
- 3.Electricity costs are equally divided among all students.
- 4.This school is a boarding school.

Scholarship programs, such as those offered by the Japan Student Services Organization (JASSO), are available. For more details, please contact our school.



Japan Architecture Art Academy

学校法人富嶽学園 専門学校 日本建築藝術大専学校

2730-5 Kamiide, Fujinomiya City, Shizuoka Prefecture 418-0103, JAPAN

Phone: +81-544-54-1541 URL: <https://jaaa.ac.jp>

Directions



Approximately 30 minutes by car from Tōmei Expressway
Fuji IC, Shin-Tōmei Expressway Shin-Fuji IC,
or Chūō Expressway Kawaguchiko IC.



Approximately 40 minutes
by car from Shin-Fuji Station
on the Tokaido Shinkansen.



Take National Route 139 and exit at Kamiide IC, then turn right after 700 meters past Fuji Wild Adventure.

BS 東

「THE 名門校」

Broadcast every Saturday
morning at 10:30 AM.

We are sponsors of this program.

Shibuya Incubation Office

12-8 Nanpeidai-cho, Shibuya-ku,

Tokyo 150-0036, JAPAN

Phone: +81-3-3770-6201

Contact 03-3770-6201

info@jaaa.ac.jp